

# How do I setup the PHS VPN (Sonicwall Connect Tunnel) on my computer?

Here we will walk you through how to set up and connect to the PHS VPN.

**Note:** You will need the mobile device that you use for the UCD DUO mobile app.

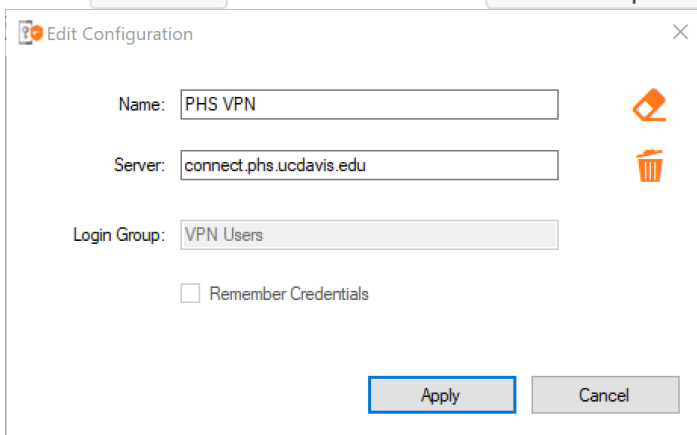
## Initial Setup

1. Double click **ConnectTunnel** icon on your desktop.

If you don't see it feel free to contact [ithelp@phmail.ucdavis.edu](mailto:ithelp@phmail.ucdavis.edu) to help find it or get it installed.

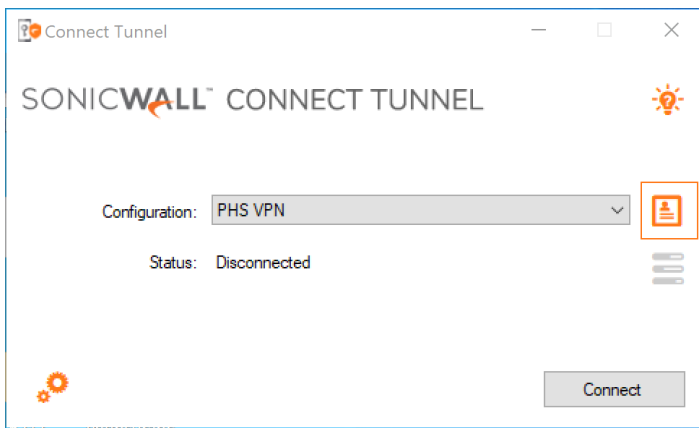
2. Click the **Add Profile icon** to add a new configuration profile.

3. Enter **PHS VPN** as the Name and **connect.phs.ucdavis.edu** as the Server

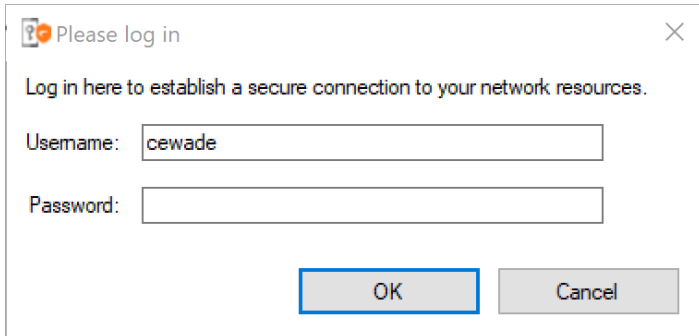


The screenshot shows a window titled "Edit Configuration" with a close button (X) in the top right corner. Inside the window, there are three input fields: "Name:" with the text "PHS VPN", "Server:" with the text "connect.phs.ucdavis.edu", and "Login Group:" with the text "VPN Users". To the right of the "Name:" and "Server:" fields are two orange icons: a profile icon and a trash can icon. Below the "Login Group:" field is a checkbox labeled "Remember Credentials" which is currently unchecked. At the bottom of the window are two buttons: "Apply" and "Cancel".

4. After the profile is added the connection status will be "Disconnected". Click the "**Connect**" button to login.



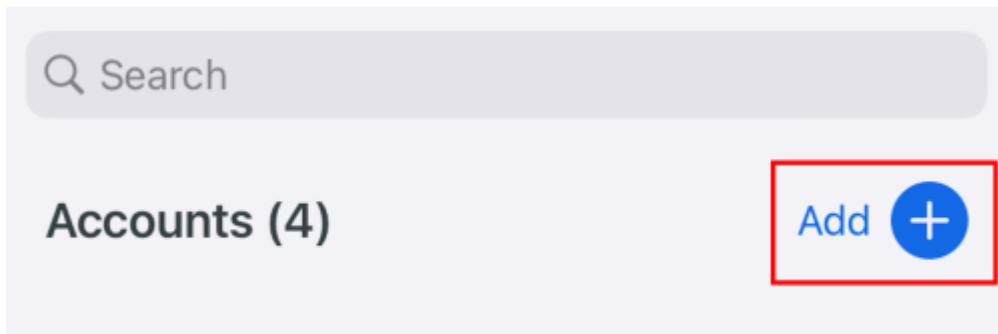
5. Enter your PHS username and password and click the OK button.

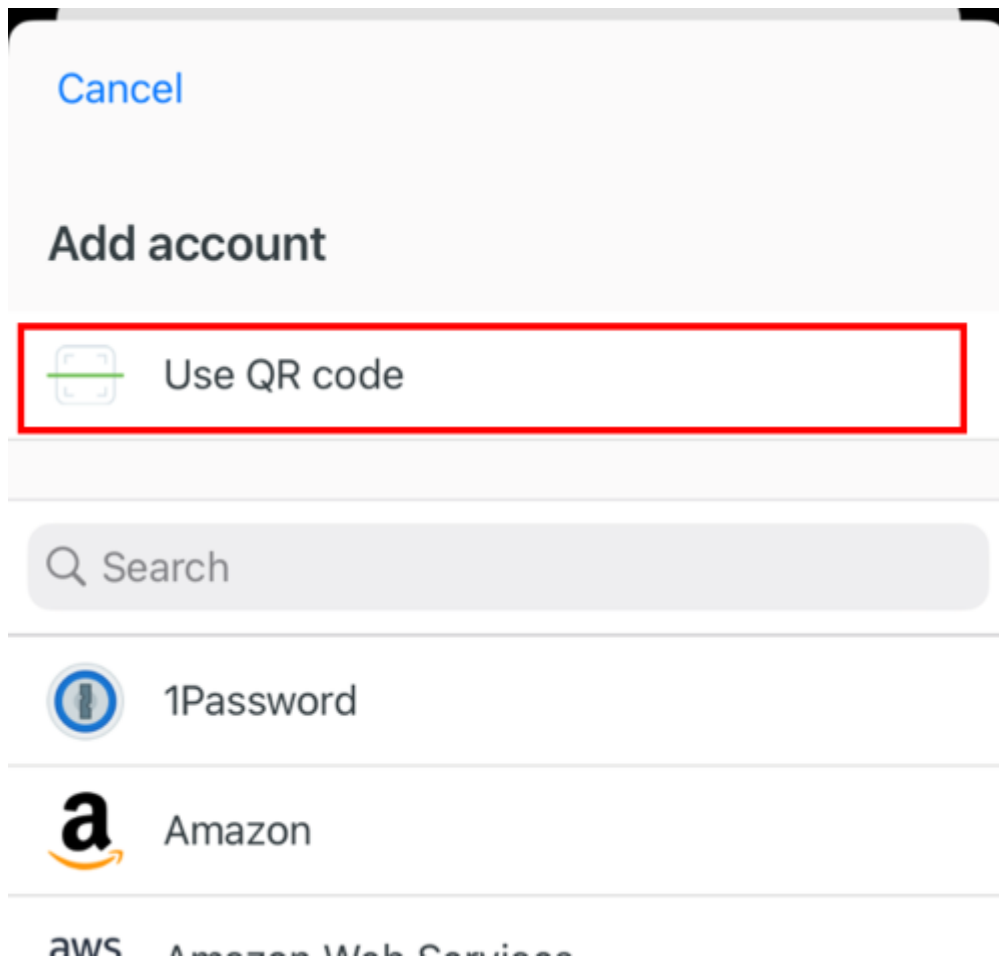


6. The first time you log on you will be prompted set up 2FA.

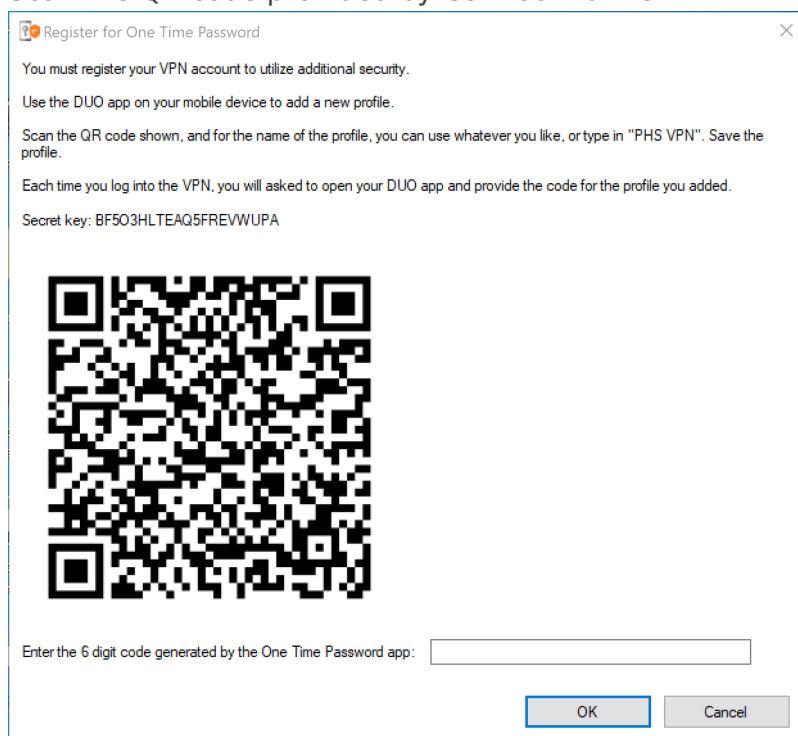
1. Using the mobile device that you use for the UCD DUO mobile app open the DUO

2.           



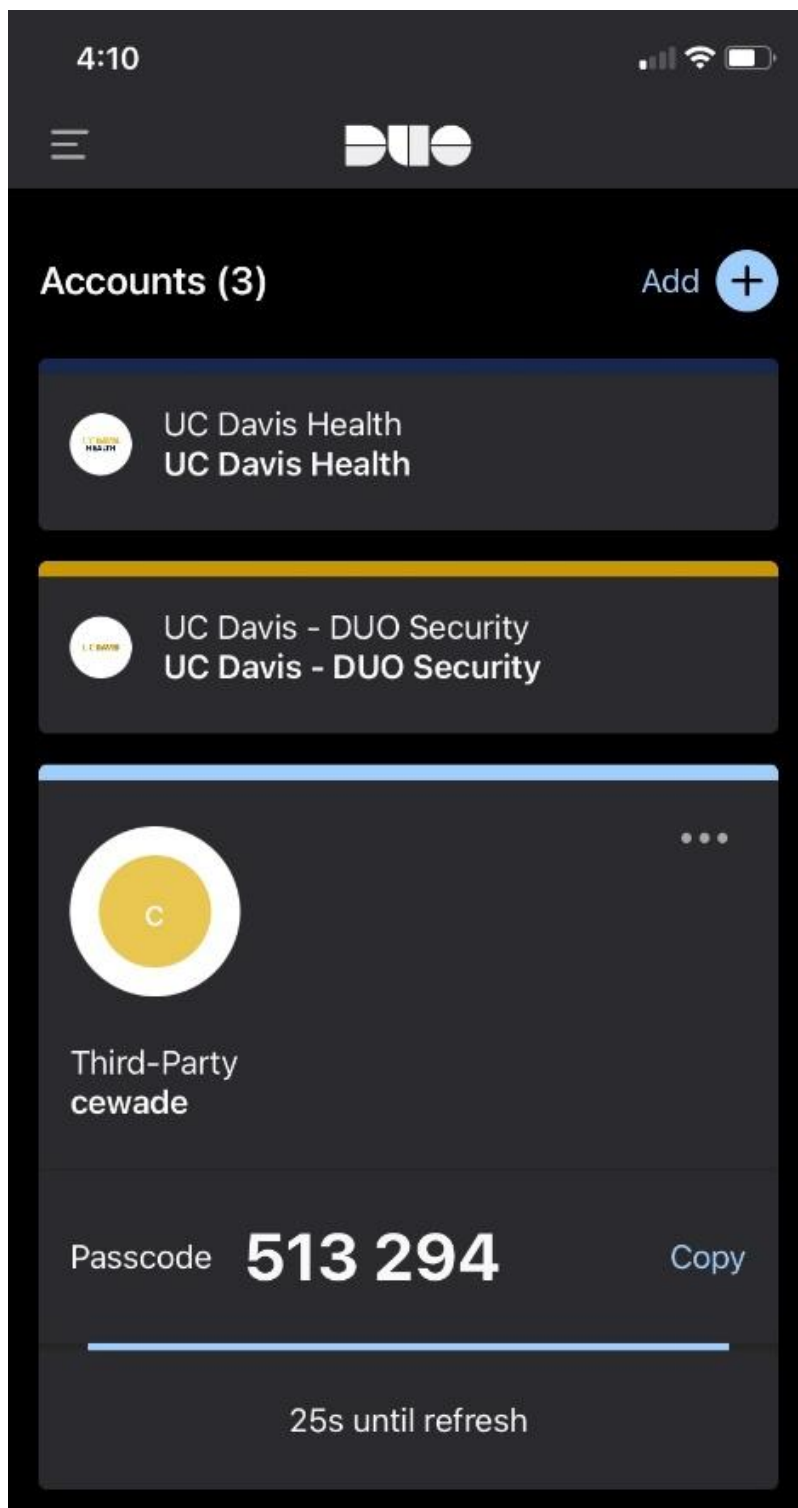


3. Scan the QR code provided by Connect Tunnel

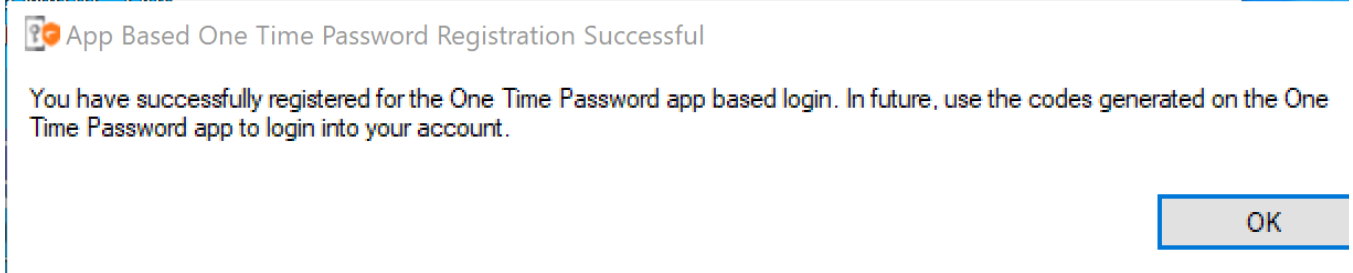


4. Enter the six-digit THIRD PARTY code.

The six-digit code will appear as 2 sets of three numbers separated by a space. Enter all 6 numbers without the space.



7. After entering the six digit code you should get the following success message.



You should now be set up and connected to the PHS VPN. For instructions on how to connect in the future please see the following KB entry: [How do I connect to the PHS VPN \(Sonicwall Connect](#)

Tunnel)?

---

Revision #2

Created 31 May 2024 16:40:23 by Samuel Tseng

Updated 31 May 2024 17:09:32 by Samuel Tseng