

# VPN

- [How do I access the UCDH VPN \(Cisco Secure Connect\)? \[PHS Official VPN\]](#)
- [How do I access the UCD Library VPN \(PulseSecure\)?](#)
- [How do I access the PHS VPN \(Sonicwall Connect Tunnel\)?](#)
- [How do I setup the PHS VPN \(Sonicwall Connect Tunnel\) on my computer?](#)
- [How do I Connect to Eduroam?](#)

# How do I access the UCDH VPN (Cisco Secure Connect)? [PHS Official VPN]

UCD Health uses Cisco AnyConnect as its VPN client. This is the VPN that you should use to access any PHS resources.

Username and password are the same ones you use for ecotime.

The Cisco AnyConnect installation file and the steps to connect to the UCD Health VPN are available on this page: <https://health.ucdavis.edu/remote-access/vpn/download-and-install-vpn>

# How do I access the UCD Library VPN (PulseSecure)?

UCD Library uses Ivanti Pulse Secure as its VPN client.

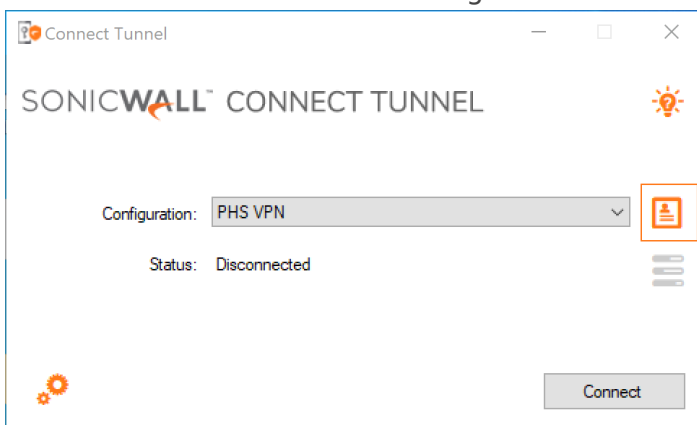
The Pulse Secure installation file and documentation on how to connect to the UCD Library VPN are available on this page: <https://library.ucdavis.edu/vpn/>

# How do I access the PHS VPN (Sonicwall Connect Tunnel)?

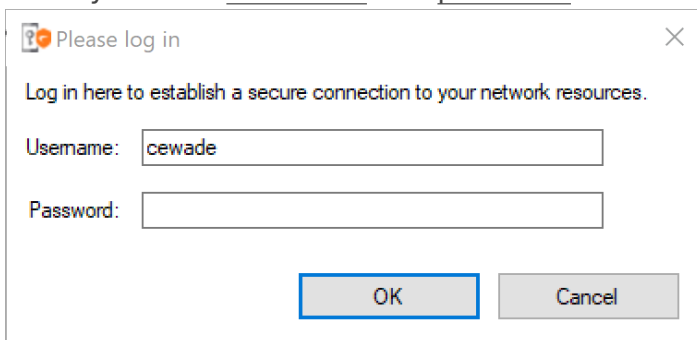
This page is for people who have completed the account setup and are connecting for a second time. If you have not completed the setup before, please see [How do I setup the PHS VPN \(Sonicwall Connect Tunnel\) on my computer?](#)

## Connecting To The VPN

1. If the Connect Tunnel application is not launched, Double click on the icon on your desktop to launch it
2. Click the “**Connect**” button to login.

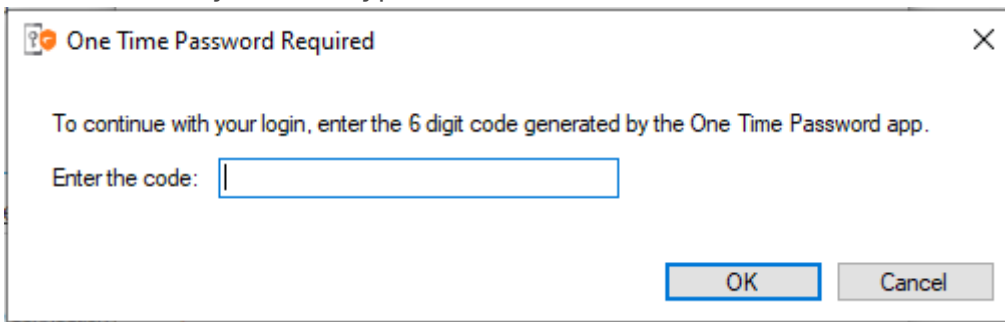


3. Enter your PHS username and password and click the OK button.



4. Open up your duo app and get the 6 digit code for Connect Tunnel and enter it into Connect Tunnel.

Click **OK** once you have typed in the code.

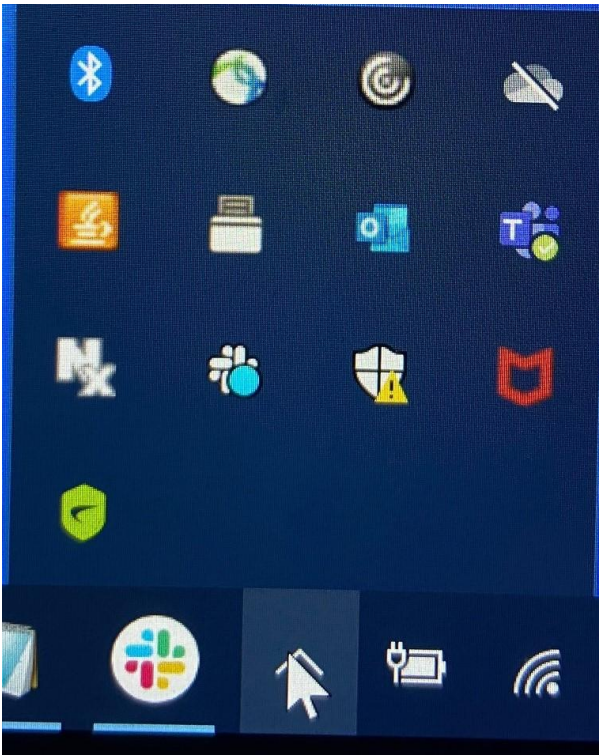


You Should now be connected to the PHS VPN. You can now connect your file shares and do whatever you needed to do while connected to the PHS network.

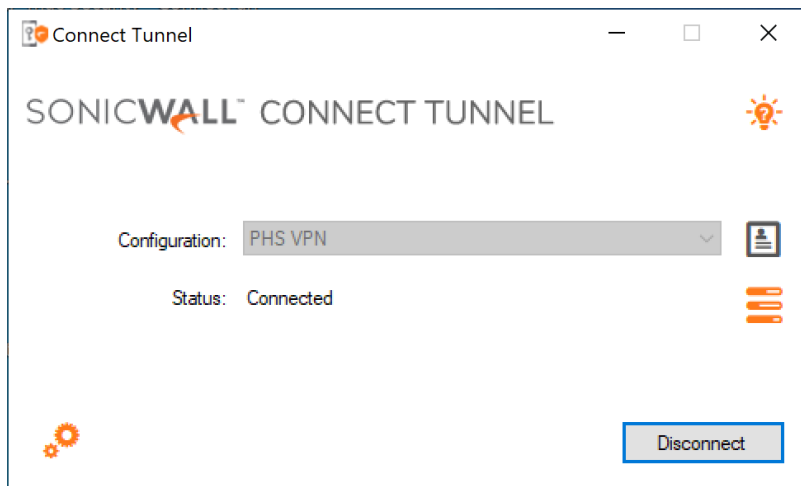
## Disconnect From The VPN

Sometimes you will need to disconnect from the VPN for various reasons. The following steps will show you how to disconnect.

1. Click the chevron " ^ " in the system tray to display the green ConnectTunnel icon.
2. Click the icon and the Connect window will appear



3. Click **Disconnect**



# How do I setup the PHS VPN (Sonicwall Connect Tunnel) on my computer?

Here we will walk you through how to set up and connect to the PHS VPN.

**Note:** You will need the mobile device that you use for the UCD DUO mobile app.

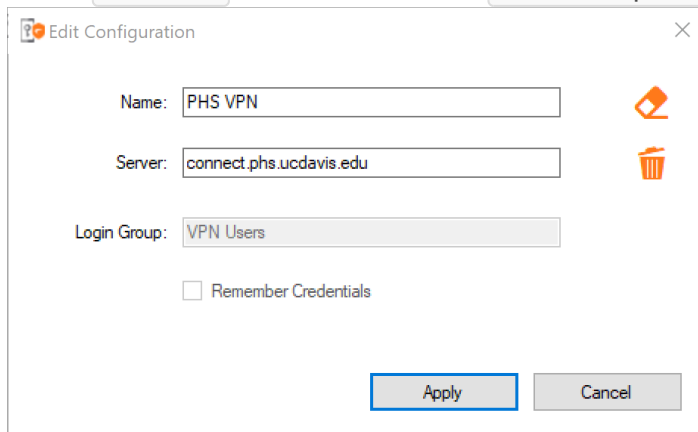
## Initial Setup

1. Double click **ConnectTunnel** icon on your desktop.

If you don't see it feel free to contact [ithelp@phmail.ucdavis.edu](mailto:ithelp@phmail.ucdavis.edu) to help find it or get it installed.

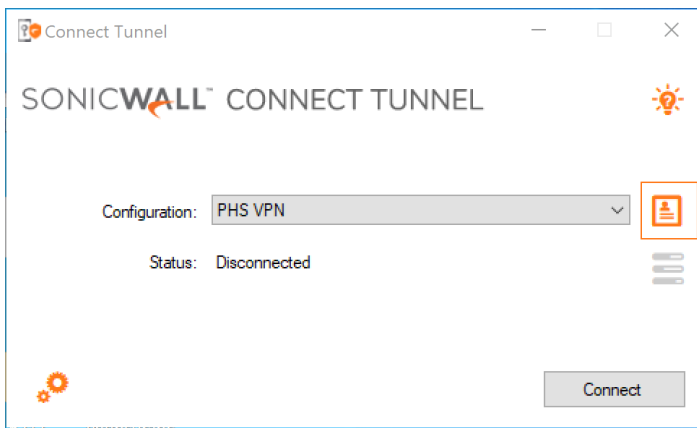
2. Click the **Add Profile icon** to add a new configuration profile.

3. Enter **PHS VPN** as the Name and **connect.phs.ucdavis.edu** as the Server

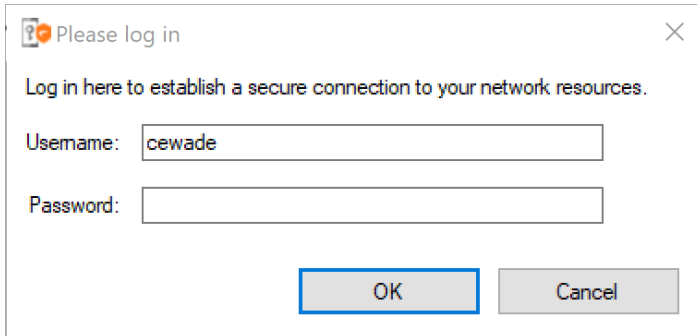


The screenshot shows a window titled "Edit Configuration" with a close button (X) in the top right corner. Inside the window, there are three input fields: "Name:" with the text "PHS VPN", "Server:" with the text "connect.phs.ucdavis.edu", and "Login Group:" with the text "VPN Users". To the right of the "Name:" and "Server:" fields are two orange icons: a profile icon and a trash can icon. Below the "Login Group:" field is a checkbox labeled "Remember Credentials" which is currently unchecked. At the bottom of the window are two buttons: "Apply" and "Cancel".

4. After the profile is added the connection status will be "Disconnected". Click the "**Connect**" button to login.


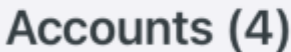


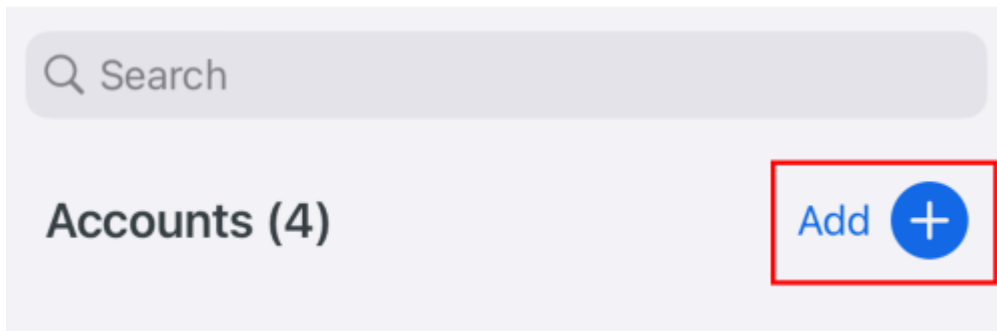
5. Enter your PHS username and password and click the OK button.



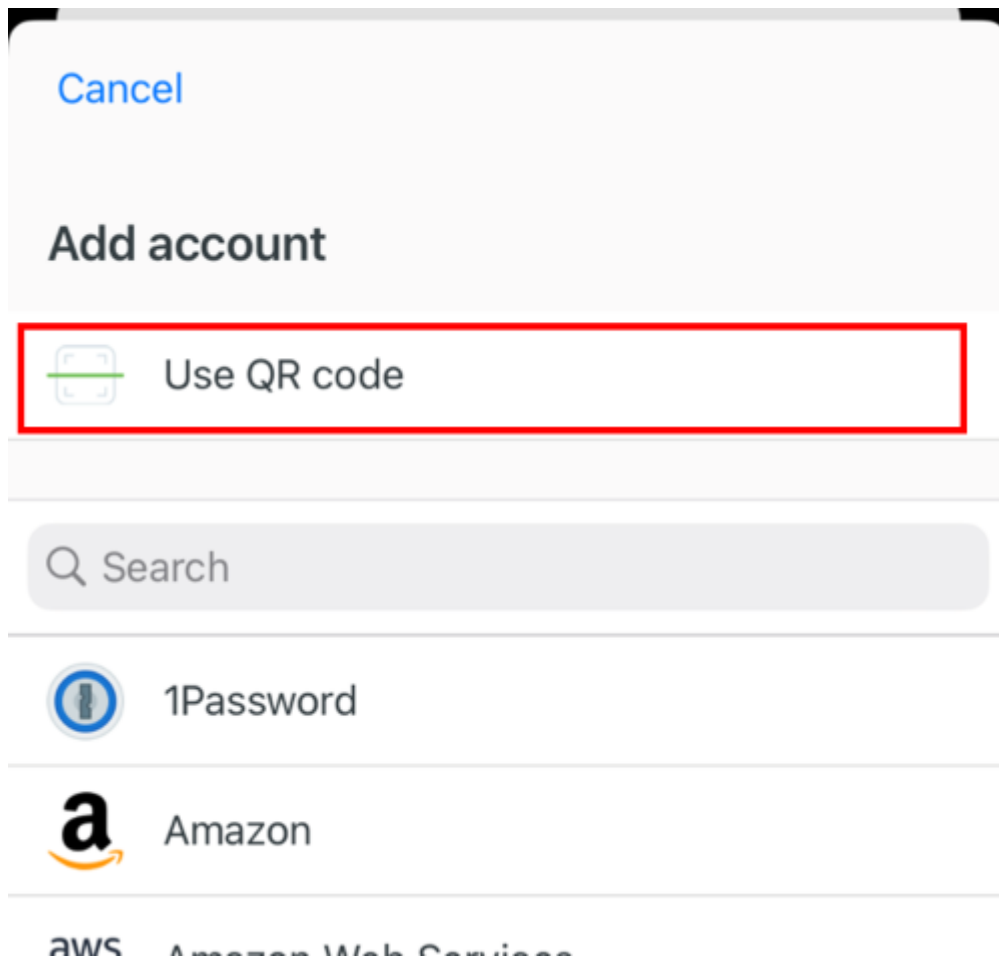
6. The first time you log on you will be prompted set up 2FA.

1. Using the mobile device that you use for the UCD DUO mobile app open the DUO

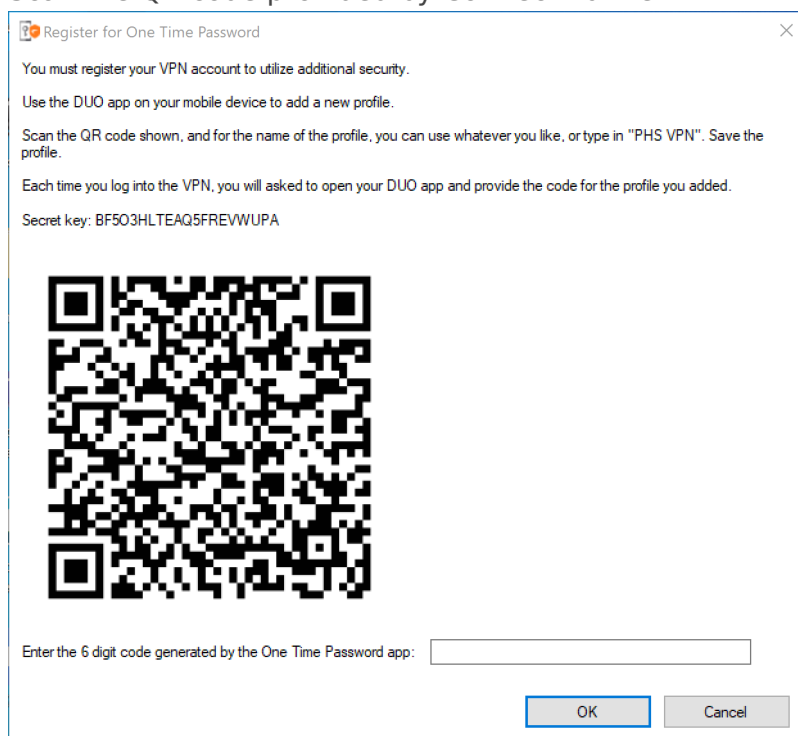
2.           





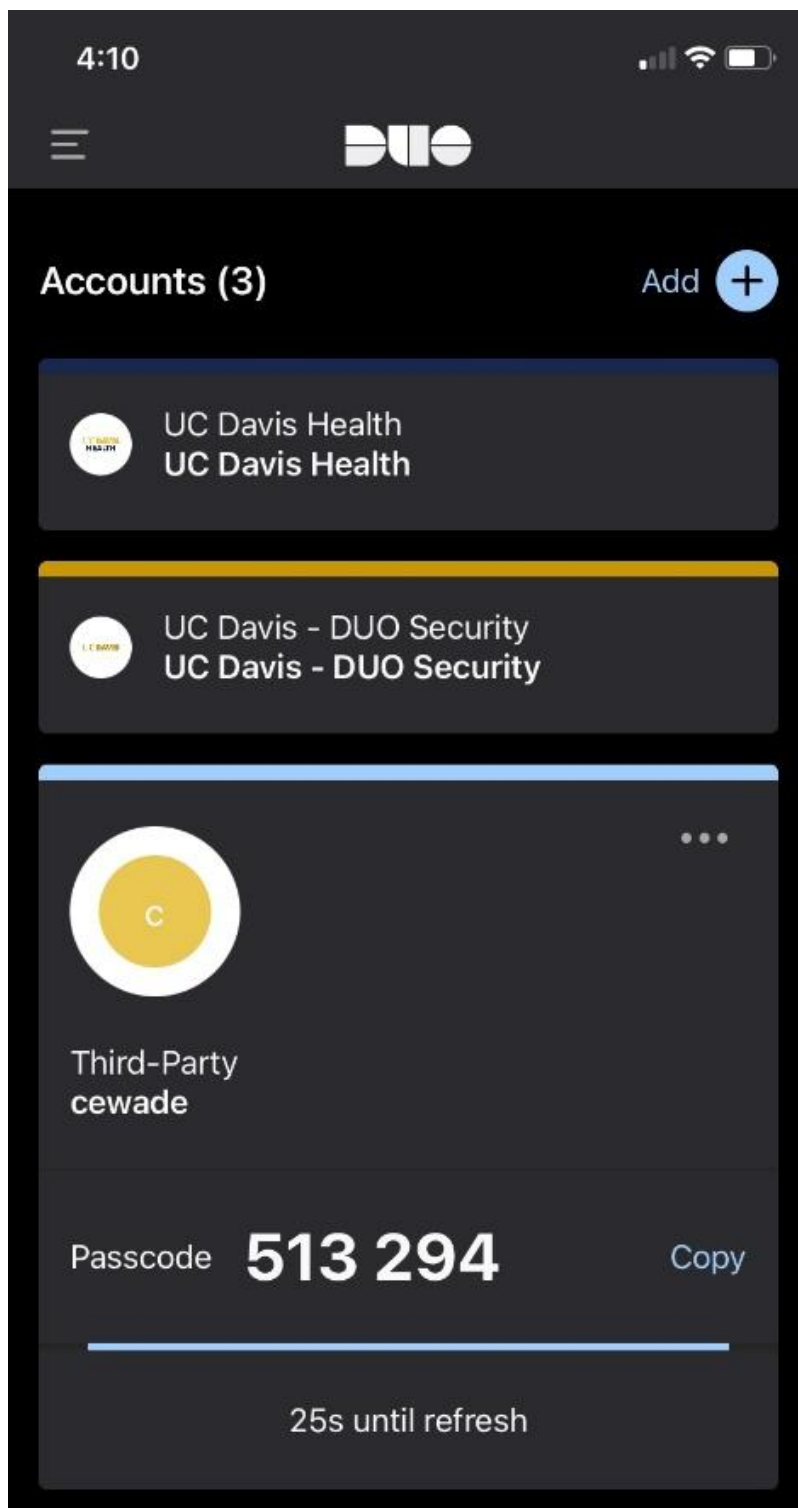


3. Scan the QR code provided by Connect Tunnel

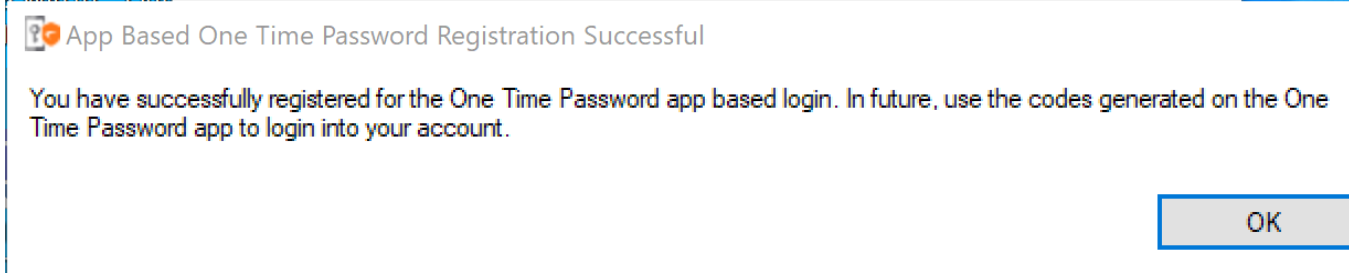


4. Enter the six-digit THIRD PARTY code.

The six-digit code will appear as 2 sets of three numbers separated by a space. Enter all 6 numbers without the space.



7. After entering the six digit code you should get the following success message.



You should now be set up and connected to the PHS VPN. For instructions on how to connect in the future please see the following KB entry: [How do I connect to the PHS VPN \(Sonicwall Connect](#)

Tunnel)?

# How do I Connect to Eduroam?

The Eduroam Configuration Assistant Tool is the recommended method of connecting your device to the Eduroam wireless network:

[https://servicehub.ucdavis.edu/servicehub?id=ucd\\_kb\\_article&sysparm\\_article=KB0002025#cat](https://servicehub.ucdavis.edu/servicehub?id=ucd_kb_article&sysparm_article=KB0002025#cat)

View the UCD IET KB Article for additional information on connecting to Eduroam:

[https://servicehub.ucdavis.edu/servicehub?id=ucd\\_kb\\_article&sysparm\\_article=KB0002025#](https://servicehub.ucdavis.edu/servicehub?id=ucd_kb_article&sysparm_article=KB0002025#)